

1,2,3, **VOTE!**

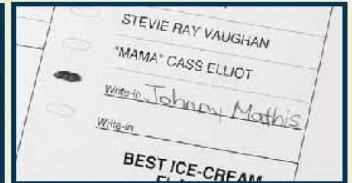
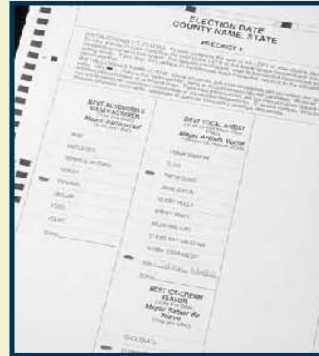
Optical Scan Voting With the ES&S Model 100

1 MARK BALLOT

Using a paper ballot, make your selections for a particular candidate or issue by filling in ovals on the ballot. To keep your paper ballot from view, a privacy sleeve may be requested from the poll worker.

- **WRITE-IN CANDIDATES**

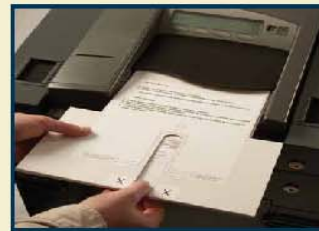
For write-in candidates, fill in the oval next to the words **"WRITE IN"** and write the candidate's name on the line.



Above: Example of a write-in candidate selection with its oval darkened.

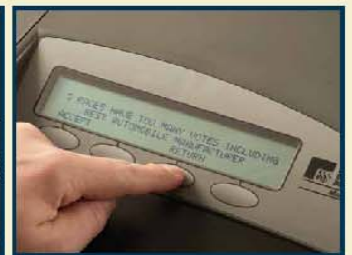
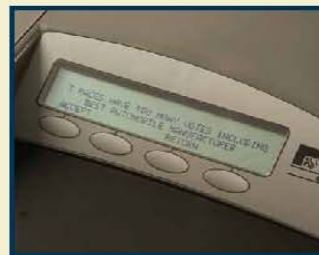
2 INSERT BALLOT

Insert your ballot into the ballot acceptor. The Model 100 will accept ballots in any orientation (backward, upside down, etc.).



3 REVIEW BALLOT

Check the LCD screen to see whether there are any issues with the ballot such as overvoting, undervoting, and blank ballots. Press **"RETURN"** to get the ballot back to make changes, or press **"ACCEPT"** to submit the ballot.



✓ MARK YOUR BALLOT CORRECTLY

It is important that you mark your ballot properly before inserting it into the ES&S Model 100 Optical Scan Ballot Counter to ensure that your votes are counted correctly.

- ✓ Mark your ballot by completely darkening the oval next to your choice. Do not use an "X" or other notation, it will not be read by the Model 100.
- ✓ Use only the approved marking device provided by election officials or found in the voting booth.
- ✓ Do not mark more than the allowable number of selections.

- ✓ Make sure all of the races you intend to vote in are marked appropriately.
- ✓ If you make a mistake in marking your ballot, please ask the election officials for a replacement ballot.

Do not fold your ballot before inserting it into the ballot acceptor.